

Awarded by



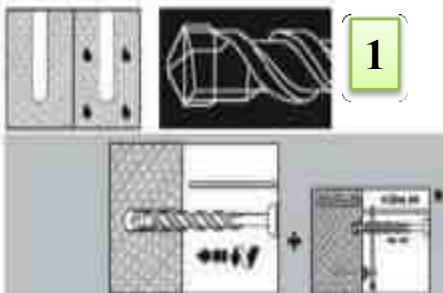
## REBARING



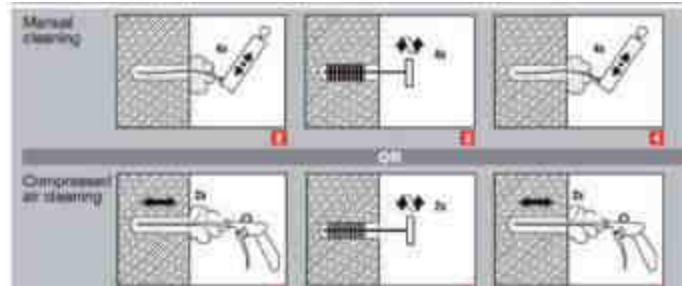
- Rebar is short reinforcing bar. A steel bar used as tension device in reinforced concrete & masonry structures to strengthen & hold the concrete compression.
- Rebar significantly increases the tensile strength of the structure. Rebar's surface is often patterned to form a better bond with the concrete.

### Installation Procedure :-

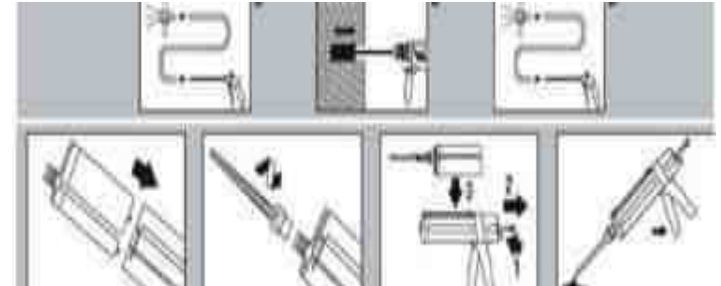
2



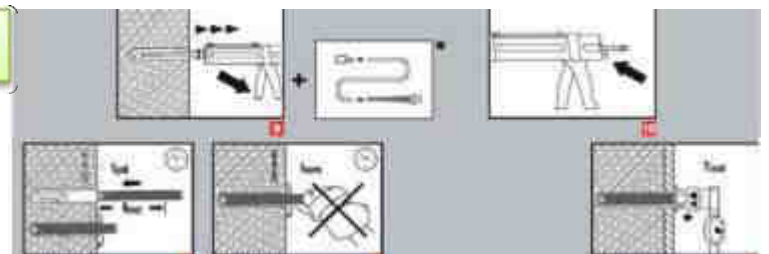
1



3



4



Awarded by



### Applications:-

- Dowel Bar Fixing. [8mm to 32mm]
- Foundation Bolt Fixing.
- Ms Plate Bolt Fixing.
- Tower Foundation Bolt Fixing.
- All types of steel bar & Anchor Fixing.
- Wood & Aluminum frame Fixing.

